



SUMMER 2024 POCKET GUIDE

An Introduction to the Latest
Innovations from Biamp

biamp.

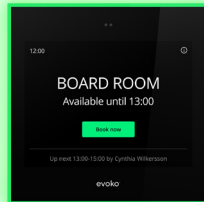
EVOKO ROOM AND DESK MANAGERS



The Evoko™ Naso and Kleeo are cloud-connected, highly intuitive room and desk management solutions that streamline the process of booking meeting rooms and shared desk spaces. Their overall simplicity saves valuable time and reduces scheduling conflicts, leading to more productive workdays.

NASO

Naso has been updated with a streamlined user interface, faster performance, and more comprehensive, and actionable, data-based insights into room usage.



KLEEO

The Kleeo is the perfect desk booking device for any office using flexible, shared workstations. The device's overall simplicity saves valuable time and reduces scheduling conflicts.



KEY FEATURES:

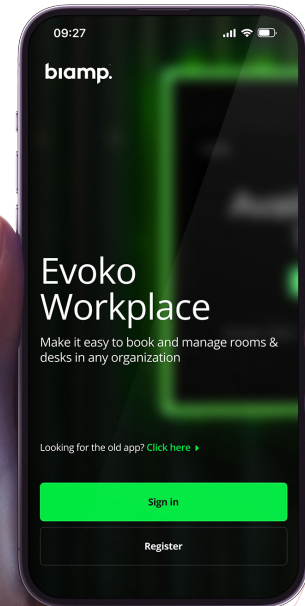
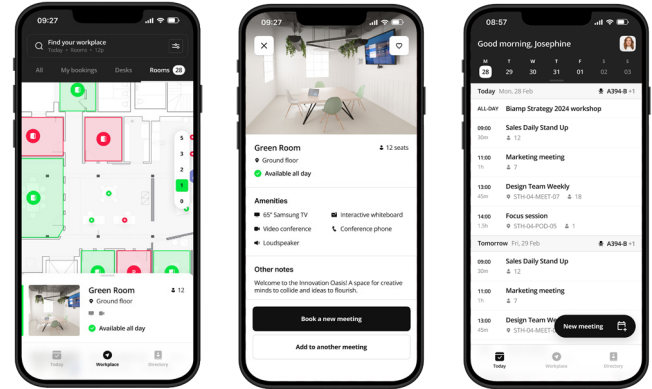
- **NEW:** Compatibility with Google Workspace—in addition to Microsoft Outlook—means room scheduling can now be accomplished through two of the most popular cloud-based calendar applications
- **NEW:** The Naso and Kleeo now share a single admin tool for fast and easy room and desk scheduling—Evoko Workplace Admin
- Green illumination indicates a room or desk is available, red when in use, and amber when between bookings
- Compatible with RFID cards or tags for effortless user authentication

EVOKO WORKPLACE APP

The Evoko Workplace app makes it easy to book a desk, room, or any workspace—anytime, from anywhere. The Workplace platform eliminates double bookings, shows room and desk availability, and offers data-driven insights into space utilization. The solution enhances collaboration, reduces workplace stress, and integrates with Microsoft and Google calendars for Evoko Naso and Kleeo scheduling devices.

KEY FEATURES:

- Book rooms and desks, and create meeting invitations using the Workplace App
- Filter room availability searches based on seating capacity and AV capabilities
- Synchronize with Microsoft Outlook or Google Calendar
- The intuitive home screen provides a clear overview of room and desk bookings
- Receive data-based, actionable insights to workplace resource usage
- Seamlessly integrated with Evoko Naso room manager and Kleeo desk manager



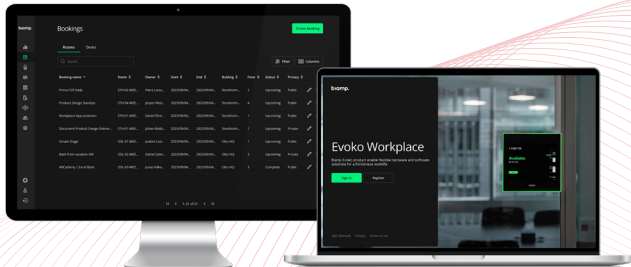
EVOKO WORKPLACE ADMIN



Evoko Workplace Admin is an intuitive, cloud-based management system that greatly simplifies room and shared-desk scheduling, while providing real-time, unified Evoko system monitoring and device management across both Naso and Kleeo solutions.

KEY FEATURES:

- **NEW:** Floor plan view on the overview screen provides an easy method for quickly viewing which rooms and shared desks are available
- **NEW:** Comprehensive and actionable data-based insights into room usage
- **NEW:** Workplace bookings tool lets a single admin have insight into all meeting room availability for easy scheduling in support of numerous staff members



BIAMP WORKPLACE



Biamp Workplace represents a new, superior approach to centralized AV system monitoring, management, and scheduling across a wide and growing range of Biamp technologies. This powerful, cloud-based solution combines all the benefits of SageVue with the Evoko Workplace app and admin tools—including room and desk booking, Microsoft Outlook and Google Calendar synchronization, and data-based, actionable insights about workplace resource usage. Now, system updates and troubleshooting can happen across multiple locations anytime, from anywhere. Biamp Workplace is simple, scalable, powerful workplace management at its best.

KEY FEATURES:

- Cloud-based, centralized platform for easy management of Biamp Tesira™, Devio™ SCX, Voltera™ D and D M, and Evoko systems
- Remote management and firmware updates reduce on-site interventions
- Real-time alerts and device monitoring
- Actionable insights to optimize system performance, including utilization by location, time of day, room style, type of equipment, and more
- Location-based presentation of device information—view and sort by campus, building, floor, room, and more



MAX CONNECT

MAX Connect is an easy-to-use, yet powerful, content-sharing and collaboration solution that turns any space into a bring-your-own-meeting (BYOM) room. Now participants can use their own devices to share and interact with content, control room AV equipment, and join UC meetings using their app of choice — including Microsoft Teams and Zoom. With MAX Connect, users have unprecedented control over their collaboration experience, leading to more productive meetings and enhanced engagement, ideation, and decision making.

- **NEW:** Dual screen support enables MAX Connect to extend participant content onto two screens in a single meeting room—a common scenario in today's collaboration environments.
- **NEW:** Connect up to 30 participants in a single session—ample capacity for large meetings and classrooms.
- Up to six pieces of content can be shared simultaneously: the digital whiteboard and content from as many as five presenters
- Built-in tools allow users to annotate shared content and the virtual whiteboard
- Shared content is rebroadcasted to participant devices, letting them select, view, and annotate content on their own devices
- Participants can connect and control room peripherals wirelessly, letting them make UC calls from the device using their favorite platform
- During a UC call, participants can replace the room camera view with their device camera view to frame objects, a physical whiteboard, or themselves
- Collaboration sessions can be managed through the included handheld remote control, the optional Touch 8 MAX control panel, or a touch-enabled room display



FEATURE HIGHLIGHTS:

- Users can connect through a browser, desktop apps, standard casting protocols, or with an HDMI cable
- Up to five participants can share content simultaneously (the whiteboard makes six)
- Every participant can interact with the shared content on their own personal device—making it easy to zoom-in or focus on specific points of interest
- The room's camera stream can be replaced by participants' own cameras to frame themselves, a wall-mounted whiteboard, or other objects
- Meeting room display peripherals can be controlled through the included handheld remote or with the optional Biamp Touch 8 MAX touch panel

MAX CONNECT BYOM ROOM COMPONENTS:

- The MAX Connect BYOM Room System with included remote control
- Optional Touch 8 MAX for peripheral control and session moderation



VOLTERA AMPLIFIED LOUDSPEAKER CONTROLLERS

Voltera D M and D Series amplified loudspeaker controllers are packed with sophisticated yet simple tools for tuning rooms, and a host of other one-of-a-kind features that drive reliability and audio performance, as well as space and cost savings.

VOLTERA D M SERIES

Previously unavailable in this segment, Voltera D M networked, amplified loudspeaker controllers feature the full performance of a standalone Tesira Digital Signal Processor (DSP), built into the 1 RU chassis, providing the capacity to host, select, configure, and tune a complete Tesira-based system. Configurable through Tesira or VenueTune software, Voltera D M amplified loudspeaker controllers seamlessly combine amplification and processing into a single, cost-effective networked solution ideal for small-to-medium sized venues such as hotels, restaurants, retailers, and houses of worship.

VOLTERA D SERIES

Voltera D amplified loudspeaker controllers are ideal for installed sound applications comprised of primarily loudspeakers, such as paging, voice reinforcement, and background music in small venues. Featuring the right amount of DSP to set up and manage loudspeaker settings and performance, D Series products are configurable through Tesira or VenueTune software.



VOLTERA D M MODELS

- Voltera D 600.4M: 600 W / 4 channels
- Voltera D 1200.4M: 1200 W / 4 channels
- Voltera D 2400.4M: 2400 W / 4 channels
- Voltera D 1200.2M: 1200 W / 2 channels
- Voltera D 2400.2M: 2400 W / 2 channels



VOLTERA D MODELS

- D 1200.8: 1200 W / 8 channels
- D 2400.8: 2400 W / 8 channels
- D 1200.4: 1200 W / 4 channels
- D 2400.4: 2400 W / 4 channels



VOLTERA D AND D M KEY FEATURES:

- **NEW:** The ALAMOS speaker library automatically configures Tesira profiles for hundreds of Cambridge, Desono, and Commercial Audio loudspeakers
- Compact and powerful—up to 8 channels (D Series), or 4 channels (D M Series) in just one RU
- Compatible with AVB, Dante, and AES67 network protocols
- Accurate raised cosine EQ below 160 Hz
- Group-controlled raised cosine EQ making it attractive for large systems
- Redundant media interface
- Power share up to +100% per channel
- Lo-Z or Hi-Z per channel to support hybrid systems
- High peak voltage output capability



PARLÉ VBC 2800 CONFERRING BAR

The Parlé™ VBC 2800 is an all-in-one conferencing bar featuring Biamp Audio Intelligence and Biamp Video Intelligence that delivers high performance AV experiences across all meeting spaces up to and including large conference rooms.

The VBC 2800 features a new dual 50 MP + 8 MP ePTZ camera system that clearly sees everyone, even further down long conference tables. The ePTZ system also features up to 16x digital zoom, and AI auto framing technology automatically switches between telephoto and wide-angle cameras for the best shot. With integrated Acoustic Echo Cancellation (AEC) and AI Noise Reduction, the VBC 2800 uses a 27-microphone array and Biamp Beamtracking™ technology to actively track and intelligently mix conversations from around the room.

Equipped with Biamp Launch™, The VBC 2800 analyzes the room's acoustic performance and then optimizes the bar for extraordinary audio to adjust for the room's unique specifications.

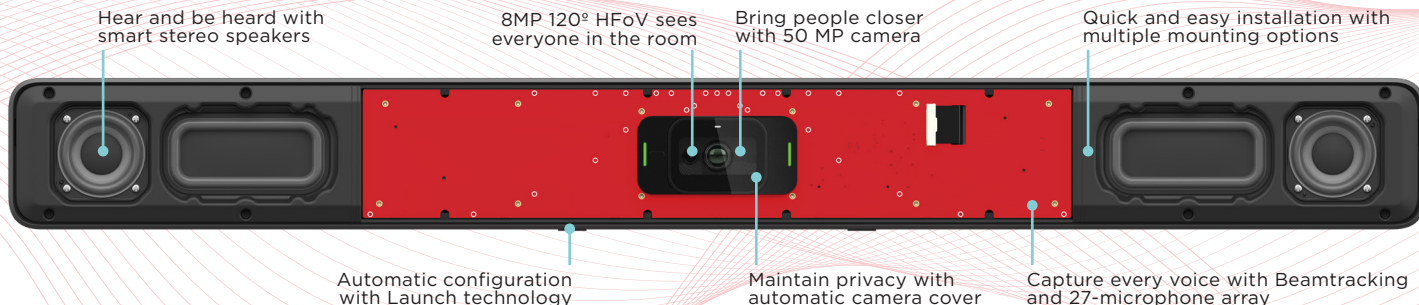


KEY FEATURES:

- Beamtracking technology uses a 27-microphone array to actively track and intelligently mix conversations
- AI noise reduction algorithm for clear voice reproduction
- Low distortion, smart stereo speakers
- Biamp Launch for one touch automatic tuning that delivers the best sound in every room
- Automatic privacy shutter and LED indications for mute status and camera activity
- Fully digital pan / tilt / zoom (ePTZ) with 16x digital zoom
- 8 MP 120° HFoV ultrawide camera for people closer to the camera
- 50 MP 86° HFoV camera for people furthest away from the camera
- AI auto framing technology to keep participants in frame
- Network port for control integration
- Analog audio input for playing local in-room content
- Discrete output for Assistive Listening Systems
- Easy connectivity with a UC system or BYOM hub with a single USB cable



LAUNCH



VIDI 280 CONFERENCE CAMERA

The Vidi™ 280 is a stand-alone conferencing camera, ideal across all meeting spaces up to and including large rooms, that easily connects to room experience systems like UC computes or BYOM hubs via USB-C. The Vidi 280 features a dual 50 MP + 8 MP ePTZ camera system that can see everyone in large conference rooms, capturing crisp detail at farther distances. With AI auto framing technology that automatically switches between telephoto and wide-angle cameras for the best shot, the ePTZ system also features up to 16x digital zoom.

KEY FEATURES:

- 4K, fully digital pan / tilt / zoom (ePTZ)
- 50 MP 86° HFoV camera for participants farther from the camera
- 8 MP 120° HFoV ultrawide camera for participants closer to the camera
- 16x digital zoom
- AI auto framing technology supports meeting spaces up to and including large rooms
- Activity and privacy state LED indicator
- 5 element microphone array
- USB 3.0 powered USB-C connector, cable included
- Top of display and under display mounts included



UC COMPUTE WITH ROOM CONTROL

Biamp has partnered with Lenovo® to offer a comprehensive, turn-key solution for UC rooms, enhancing collaboration in meeting spaces of all sizes.

By integrating the Lenovo ThinkSmart™ Core and Controller Kit with Biamp conferencing bars and bundles, this end-to-end solution is fully certified by Microsoft and Zoom. It simplifies deployment with preloaded Microsoft Teams Room or Zoom Rooms software, and reduces setup time.

Plus, the Biamp plugin for Lenovo allows custom control interfaces to seamlessly integrate with our Impera control family.

The solution includes an IP extension kit for easy touch panel installation using standard Cat5 cable, providing versatile placement options.

Bundled conferencing solutions from Biamp streamline adoption, making it easy to upgrade meeting spaces with this integrated UC room solution.

And as a single-source provider, we deliver world-class support from initial deployment through on-going maintenance.

The Lenovo ThinkSmart Core and Controller are now available in Biamp room bundles to create complete conferencing solutions for spaces of any size.



NEW SMALL ROOM UC BUNDLES:

Lenovo ThinkSmart Core and Controller Kit with Parlé VBC 2500 or 2800 video conferencing bars



NEW LARGE ROOM UC BUNDLES:

Lenovo ThinkSmart Core and Controller Kit with TesiraFORTÉ X 400, Parlé TCM-XA Beamtracking ceiling microphone, Parlé TCM-XEX Beamtracking expansion ceiling microphone, and Desono™ C-IC6LP low profile conferencing loudspeakers; will include the Vidi 280 conferencing camera when available



AISLE LOUDSPEAKERS

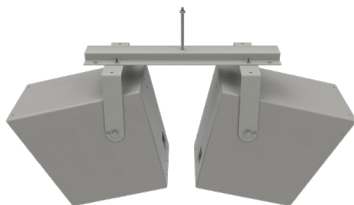
COMMERCIAL CCA-80

The CCA-80 constant coverage aisle loudspeaker is an asymmetric, full-range, 3-way horn device ideal for paging and background music. It produces a long, rectangular coverage pattern that delivers exceptional speech intelligibility in the challenging acoustic environment of long aisles or concourses.



COMMERCIAL CCA-80D

Designed for applications that require sound to radiate from a central location, the CCA-80D bundles dual constant coverage asymmetric loudspeakers with a mounting bracket for fast, low cost installations.



KEY FEATURES:

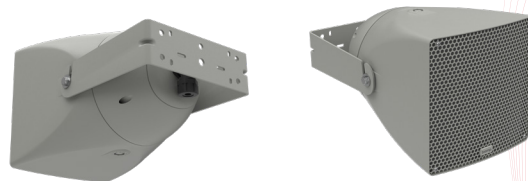
- Purpose-built for long aisles and concourses in warehouses, sports complexes, shopping malls, hotels, themed entertainment venues, and more
- Asymmetric vertical waveguide with up to 4:1 throw ratio for extended coverage
- Efficient design with 70V/100V transformers for cost-effective sound reinforcement
- Unique coverage patterns provide extended distance without significant cost escalation
- Dual speaker option provides additional mounting flexibility and reduced total system costs
- Specialty high-sensitivity voice models tailored for extremely large spaces

COMMUNITY R.15-3696

The Community™ R.15-3696 is a full-range, three-way triaxial loudspeaker that delivers excellent voice intelligibility and quality music playback, similar to the best-selling R.35-3896 loudspeaker, but in a more compact housing ideal for large installations where cost is a primary consideration.

KEY FEATURES:

- Full-range background music and clearly intelligible voice paging
- Ideal for sports field applications, stadium concourses, warehouses, gymnasiums, and other similar highly reverberant spaces
- Weather-resistant construction delivers reliable performance in areas exposed to outdoor elements



CROWD MICS

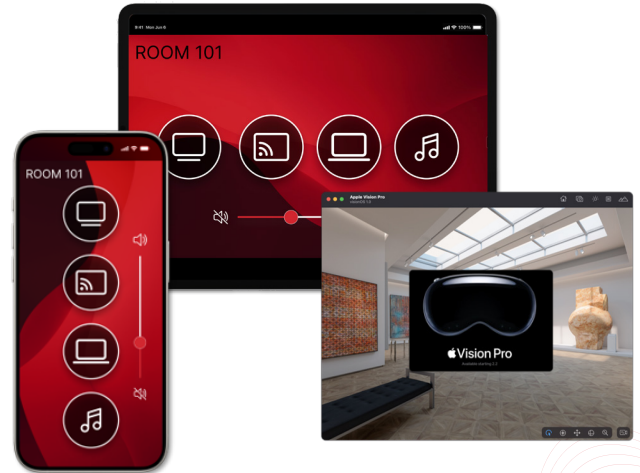
Crowd Mics™ empowers audience interaction by turning smartphones into wireless mics, eliminating the need to pass a microphone around the room. It allows presenters and attendees to connect on a personal level, while moderators maintain full control over the conversation

KEY FEATURES:

- Streamlined and simplified UI
 - Join by numeric code or QR code
 - One touch instant events
 - Easy event selection
 - Custom logos
- Push to talk—no need to hold a button while sharing your voice
- Haptic feedback vibrates when it's your turn to talk
- Online events now included at no charge—makes joining even easier—no WiFi connection required



IMPERA CONTROL APP



The Impera™ control app adds the power of Tango and Apprimo control to the convenience of a personal device. Now you can use your iPhone, iPad, or Vision Pro device to control the audiovisual peripherals in a conference room—adjust volume, change sources, adjust zoom or focus, and more.

KEY FEATURES:

- Use iPhone, iPad or the new Apple Vision Pro to access Impera Tango or Apprimo 8i interfaces
- Easily discover Tango and Apprimo systems on your network
- Control room AV without using a touch panel

CAMBRIDGE QT X SERIES



The Cambridge™ Qt X series offers both direct-field and in-plenum functionality to address the full spectrum of sound masking needs. Qt X controllers are available in 3-zone, 6-zone, and 8-zone models, and utilize existing direct-field and indirect emitters.

The Qt X platform is designed to seamlessly integrate with Tesira systems and NPX paging solutions to enable unified programming and deployment of sound management applications.



KEY FEATURES

- **NEW:** Support for up to 250 Qt X sound masking controllers on a single network
- **NEW:** Optimized system performance delivers a more responsive user experience
- **NEW:** Bulk update capability streamlines initial setup and configuration, and improved fault display simplifies troubleshooting
- Logic-based and scheduled paging, output fault monitoring, and single button paging mode for 10 button NPX paging stations
- Supports both direct-field and indirect sound masking
- Seamless compatibility with convenience paging microphones and background music sources
- System architecture enables greater reliability, easy expansion, and network capabilities
- Enables out-of-the-box compatibility with any building's life-safety system
- AVB and Dante compatibility allows for easy integration with a broad range of devices
- Compatible with existing Qt and Dynasound emitters



Qt X Active Emitters



biamp.

To learn more about the products in the Biamp pocket guide, scan the code below.



CONTACT US:

9300 S.W. Gemini Dr.
Beaverton, OR 97008
USA

E: biampinfo@biamp.com
W: biamp.com

1.800.826.1457
+ 1.503.641.7287

