

JUNE 2023

POCKET GUIDE

An Introduction to the Latest Innovations from Biamp



biamp.

MODENA MAX CONNECT



Modena™ MAX Connect enables the same comprehensive experience that users have come to love in dedicated UC conference rooms, now within BYOM collaboration spaces. With MAX Connect, users walk into any room, with any device, and join a meeting instantly using any video collaboration system, including UC platforms or messaging apps. It's the first and only seamless BYOM collaboration experience: from joining a meeting, to sharing content, to adding remote participants, to controlling room AV, MAX Connect offers the same experience for all meeting participants and makes it easy for IT to manage and deploy.

GET STARTED:

- Enter the meeting space
- Join the MAX Connect session by entering the session ID shown on the room display's welcome screen via the app or web browser

GET WORKING:

- Run calls with any UC platform by wirelessly connecting the room's available display, camera microphone, and loudspeakers

- Share your desktop or any content from your device
- Interact with shared content on a virtual whiteboard with your device, on a video touch display, or with an optional touch panel controller

FEATURE HIGHLIGHTS:

- Users can connect through a browser, through native webcasting protocols, or with an HDMI cable
- Up to six participants can share content on screen simultaneously
- Every participant can interact with the shared content on their own personal device—making it easy to zoom-in or focus on specific points of interest
- The room's camera stream can be replaced by participants' own cameras to frame themselves, a wall-mounted whiteboard, or other objects
- Meeting room display peripherals can be controlled through the included handheld remote or with the optional Biamp Apprimo Touch 8 MAX touch panel

MODENA ROOM COMPONENTS:

- The MAX Connect wireless conferencing system with included remote control
- Optional Apprimo Touch 8 MAX for peripheral control and session moderation



EASYCONNECT MPX 100



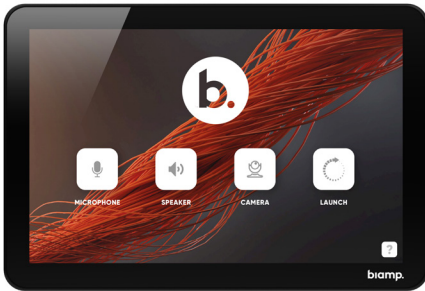
EasyConnect MPX 100 is an easy to use media switcher designed for conference rooms equipped with a dedicated UC room system, such as a Microsoft Teams Room or Zoom Room, but from which a user occasionally needs to use an alternate UC platform.

When a user needs to use an alternate UC platform, a laptop connects to the second MPX 100 input and it will automatically switch away from the primary UC host system and connect the user device to the room AV peripherals. Launch the alternate UC meeting from the laptop and conduct the meeting as normal. As soon as the user disconnects, the room peripherals return to the dedicated UC room host.

KEY FEATURES:

- Easily adds BYOM calls to UC rooms
- USB and HDMI connectivity with no drivers required
- Mounts behind the display and includes cables that run to the table
- SageVue compatible
- Provides passthrough to other Biamp AV solutions
- Allows firmware updates on connected Biamp devices
- Extra USB ports for cameras, microphones, or touchscreens
- HDMI 2.0 for displays up to 4K resolution

APPRIMO TOUCH 8i CONTROL PANEL



The Apprimo Touch 8i is an 8" touchscreen control panel capable of controlling up to 20 IP-based devices, enabling fully customizable solutions that perfectly match customer requirements. The user interface is easily configurable with Project Designer software, which includes a selection of themes and customizable templates.

KEY FEATURES:

- 8" capacitive touch LCD interface
- Scratch-resistant glass
- Integrated controller
- Customizable user interface to fit customers' control requirements and corporate identity
- Fits standard single gang US, EU, and DK back boxes
- Screen turns on automatically as someone approaches
- Display brightness can adjust automatically to the ambient light level
- Tabletop mount included
- PoE powered (IEEE 802.3at Class 3, 15W) for simple, single CAT5e/CAT6 cable installation

IMPERA CONTROL PADS



Impera Echo, Impera Echo Plus and Impera Uniform enable intuitive room control across a wide range of environments. The push-button simplicity of Impera control pads provide user-friendly interfaces for controlling technology in meeting rooms and learning spaces. Configured using the Project Designer drag-and-drop software, Impera control pads are easy to install, easy to operate and integrate into new and existing AV installations.

KEY FEATURES:

- Include on-board controllers; no external processor required
- Software-configurable via Project Designer software
- 4- and 8-button models available in EU, DK, and US form factors
- Control devices via LAN, RS-232, IR, or GPIO
- Support email notifications for lamp/filter hours and warning

IMPERA TANGO

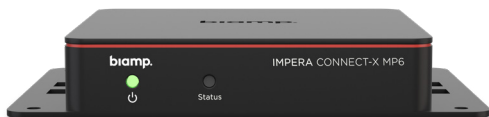


The Impera Tango controller for Biamp touch panels provides an easy and versatile AV control system for medium and large conference rooms. The Impera Tango is equipped with three bi-directional RS-232 interfaces for sending commands to AV devices with feedback functionality. It is additionally equipped with 2 uni-directional RS-232 interfaces for serial or infrared communication, and 8 GPIO for control of relays, switches and sensors.

KEY FEATURES:

- Software-configurable via Project Designer software
- 3 bi-directional RS-232 ports or 6 IR ports
- 2 uni-directional RS-232 ports or 4 IR ports
- 4 built-in assignable relays
- 8 GPIO for control of relays, switches, and sensors
- PoE powered (IEEE 802.3at Class 3, 15W)

IMPERA CONNECT-X MP6



Easily extend the versatile control of Impera controllers or the Apprimo Touch 8i control panel with the addition of more AV interfaces. This small device adds one bi-directional RS-232 port for sending commands to an AV device with feedback functionality, and two uni-directional RS-232 ports. It also includes three GPIO ports. These additional ports are easily configured from with the Project Designer software.

KEY FEATURES:

- Easily extend the versatility of Impera controllers, control pads, and Apprimo Touch 8i control panels
- Can also be used with other Biamp Impera controllers to easily add more ports
- Control devices via RS-232, IR, or GPIO
- Software-configurable via Project Designer software



COMPLETE ROOM SOLUTIONS WITH UC COMPUTE

We've partnered with Lenovo® to deliver a state-of-the-art compute device that enables Biamp to offer complete, end-to-end conference room solutions.

Add smarter collaboration technology to meeting rooms of all sizes with the Lenovo ThinkSmart™ Core and Controller Kit. It's the ideal UC compute solution for seamless integration with Biamp conferencing bars and bundles.



THINKSMART CORE KEY FEATURES:

- Pre-loaded with Teams or Zoom
- Wi-Fi, Bluetooth, Ethernet connectivity
- Intel i5 processor
- Windows® 10 IoT Enterprise
- USB, USB-C, HDMI, and Thunderbolt connections
- Includes VESA mount kit
- Kensington® lock-ready
- 3-year warranty

THINKSMART CONTROLLER KEY FEATURES:

- 10.1" screen size
- 1280 x 800 resolution
- Motion detection wakes screen at 3 meters
- Anti-glare and anti-smudge
- Rotatable 30 and 60 degrees
- Headphone/mic output
- Powered by USB-C 2.0 connection to ThinkSmart Core
- Kensington mini-lock-ready

The Lenovo ThinkSmart Core and Controller pair with Biamp room bundles to create complete conferencing solutions for spaces of any size.



SMALL ROOM UC SOLUTION:

Lenovo ThinkSmart Core and Controller Kit with Parlé VBC 2500 Conferencing Bar



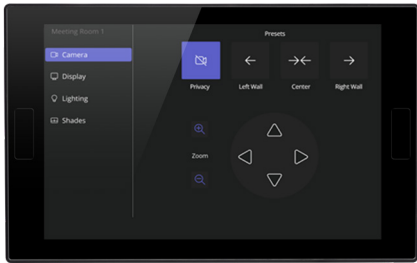
MEDIUM ROOM UC SOLUTION:

Lenovo ThinkSmart Core and Controller Kit with Medium Room Bundle, featuring a TesiraFORTÉ™ X audio processor, a Parlé microphone, and two Desono™ C-IC6 loudspeakers



LARGE ROOM UC SOLUTION:

Lenovo ThinkSmart Core and Controller Kit with Large Room Bundle, featuring a TesiraFORTÉ X audio processor, two Parlé microphones, and four Desono C-IC6 loudspeakers



ROOM CONTROL FOR MICROSOFT TEAMS AND ZOOM SYSTEMS:

This software-enabled feature from Biamp adds Impera room control to Microsoft Teams Room and Zoom Room unified communications (UC) systems. With this feature, a new page flip button appears on the UC room screen, giving the end-user the ability to operate any connected, controllable device in the UC room using the same touch panels used for meeting management.

KEY FEATURES:

- New addition to all Biamp UC computes
- Adds Biamp Impera room control to UC system
- Creates a new room control page on UC touch panel
- Uses the same GUI as used to operate the UC room
- Microsoft Teams Room systems can utilize all the flexibility of Biamp UI design to create room control interfaces
- Set up room controls in Project Designer drag and drop configuration software



PARLÉ CONFERENCE BARS

Delivering extraordinary audiovisual experiences to small through medium sized conference rooms, our Parlé™ conferencing bars feature professional microphones and loudspeakers, with an optional 4K camera, in a convenient, all-in-one form factor performance-optimized for conferencing.



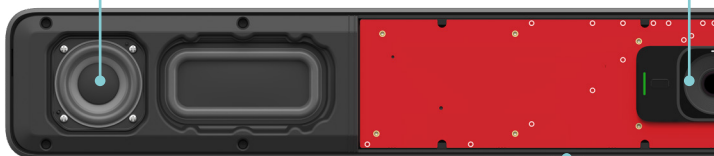
PARLÉ VBC 2500 CONFERENCE VIDEO BAR

The Parlé VBC 2500 is an all-in-one conferencing bar that delivers premium AV experiences with a 27-microphone array and a wide angle 4K camera designed for conferencing environments. Biamp Beamtracking™ technology actively tracks and intelligently mixes conversations from around the room. Two smart speakers use distortion compensation and dynamic bass enhancement technology to create room filling audio with superior speech reproduction.

The 4K camera incorporates high quality optics to stream crystal-clear 1080p video at 30fps. The VBC 2500 also offers auto framing technology to identify meeting participants and to adjust the focus and zoom to keep participants in view.

Hear and be heard with smart stereo speakers

Maintain privacy with automatic camera cover



Automatic configuration with Launch technology

The VBC 2500 features Biamp Launch, an automated tuning system that optimizes the audio to each unique conference space.



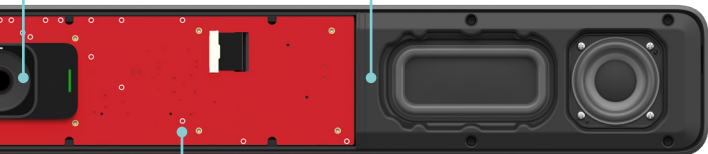
LAUNCH

KEY FEATURES:

- Beamtracking technology actively tracks conversations
- AI noise reduction algorithm for clear voice reproduction
- Low distortion smart speakers
- Biamp Launch for one touch automatic room tuning
- LED indicators for mute status and camera activity
- Wide angle 4K camera that can stream 1080p @ 30fps
- Electronic Pan/Tilt/Zoom with 5x zoom
- Auto framing technology to keep participants in frame
- Automatic camera privacy shutter
- Table, wall, and display mount options available
- **NEW** support for Assistive Listening Systems ensures that hearing impaired meeting participants benefit from the entire audiovisual collaboration experience
- **NEW** display mount allows quick and easy installation above or below any monitor and includes simple flip forward access to the back panel

Bring people closer with 4K camera

Quick and easy installation with multiple mounting options



Capture every voice with Beamtracking microphones



PARLÉ ABC 2500 CONFERENCING AUDIO BAR

The Parlé ABC 2500 is a conferencing bar featuring a 27-element mic array and Biamp Beamtracking™ technology to actively track and intelligently mix conversations from around the room. Two smart speakers use distortion compensation and dynamic bass enhancement technology to create room filling audio with superior speech reproduction. The Parlé ABC 2500 also features Biamp Launch, an automated tuning system that optimizes the audio to each unique conference space.



LAUNCH

KEY FEATURES:

- Beamtracking technology actively tracks and intelligently mixes conversations
- AI noise reduction algorithm for clear voice reproduction
- Low distortion smart speakers
- Biamp Launch for one touch automatic room tuning
- LED indicators for mute status
- Table, wall, and display mount options available
- **NEW** support for Assistive Listening Systems ensures that hearing impaired meeting participants benefit from the entire audiovisual collaboration experience
- **NEW** display mount allows quick and easy installation above or below any monitor and includes simple flip forward access to the back panel





PARLÉ SBC 2 CONFERENCING SPEAKER BAR

The Parlé SBC 2 is a high-fidelity conferencing speaker bar. Intended for huddle rooms or small conference rooms, the SBC 2 supports several options for audio input and can be integrated with a control system through an RS-232 port. It has three built-in EQ presets (music, video conference, presentation) to provide clear and precise audio in different application settings.

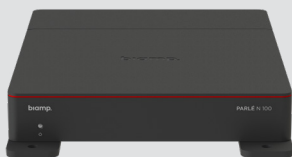
KEY FEATURES:

- Equipped with two 4” woofers and two 1” tweeters
- Four audio input options: HDMI ARC, USB, Euroblock, and RCA
- Can be integrated with a control system via RS-232
- Includes wake-on-signal capability
- Table or wall mount options available

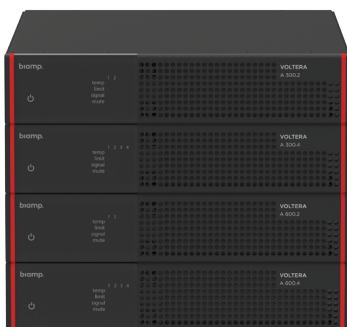
PARLÉ N 100

By adding network connectivity to Parlé conferencing bars, the Parlé N 100 port expander enables device monitoring, firmware updates, and enterprise configuration via SageVue. It also includes:

- 2 USB A ports for connecting peripherals like the Vidi 250 conferencing camera
- 1 USB B port for connecting a laptop or UC compute device
- 1 USB C port for connecting and powering the Parlé ABC or VBC 2500



VOLTERA AMPLIFIERS



The Voltera family of amplifiers offers four models designed for plug-and-play power and flexibility with no software configuration. They provide performance in a wide range of venues. Perfectly suited for retail, hospitality and dining establishments, education and corporate environments, and small houses of worship, Voltera amplifiers are compact, reliable, very flexible, and designed to meet ENERGY STAR requirements. Plus, Voltera amplifiers integrate with Tesira software for easy pairing with Biamp loudspeakers and matching power requirements.

FOUR MODELS AVAILABLE:

- A 300.2: Two-channel, 300-watt analog amplifier delivering 150 watts per channel
- A 300.4: Four-channel, 300-watt analog amplifier delivering 75 watts per channel
- A 600.2: Two-channel, 600-watt analog amplifier delivering 300 watts per channel
- A 600.4: Four-channel, 600-watt analog amplifier delivering 150 watts per channel

KEY FEATURES:

- Compact design (8.5" width) enables installation flexibility: mount under a table, in a credenza, on a wall, above a suspended ceiling, or in a standard equipment rack
- Tamper-proof front panel and intuitive switch settings on the rear panel
- Supports power sharing up to twice the power per channel
- Any channel can drive Hi-Z or Lo-Z loudspeakers
- Each channel can drive up to twice its rated power
- Low heat emission and very low energy consumption
- Included mounting accessories:
 - Single mount - 19" accessory for mounting 1 amplifier
 - Tandem mount - 19" accessory for mounting 2 amplifiers in a standard rack
 - Surface mount - For mounting vertically on a wall, upside down under a table, or above a ceiling
 - Feet for credenza or shelf placement



NEW COMMERCIAL LOUDSPEAKERS



Engineered for exceptional performance when paired with our Vocolta voice communication system, our new commercial ceiling loudspeakers deliver unmatched simplicity for significant installation cost savings, and crystal-clear voice intelligibility—a critical requirement for any speech reinforcement application.

DC220T 2' X 2' DROP CEILING LOUDSPEAKER:

- Easy installation in place of any 24" x 24" ceiling tile
- 6.5" driver provides wider coverage than comparable competitor models
- Total depth of less than 4" when installed
- 100% metal enclosure
- Simple, toolless wire connection
- UL1480A and UL2043 certified
- **NEW** Model DC220T-M now available for metric 600 mm ceiling grids

CM10TB 5.5" IN-CEILING BACK-CAN LOUDSPEAKER:

- One-way 5.5" driver delivers maximum efficiency by reducing required amplifier power by 50%
- Achieves high output similar to 8" competitor models
- Fast, easy mounting with included 24" (600 mm) tile rails and clamps
- UL1480A and UL2043 certified
- Compatible with Desono SPA accessories:
 - New construction bracket
 - Trim ring
 - 48" tile-rail kit



ENHANCED COMMERCIAL HORNS AND SURFACE MOUNT LOUDSPEAKERS

For even greater system integration flexibility when designing end-to-end Vocia voice communication systems, newly enhanced commercial horn and surface mount loudspeakers are now available worldwide thanks to the inclusion of 70V taps.

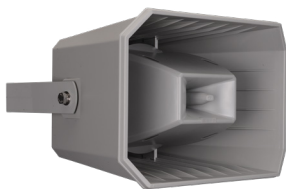
H10 / H20 / H30LT INDUSTRIAL HORN LOUDSPEAKERS:

- Polymer horns
- Included stainless steel U-bracket
- Pre-cut speaker wire attached with a water-tight gland fitting
- IP66 rated
- Available in grey
- New accessories included:
 - Conduit box adapter
 - ½" NPT conduit fitting
 - Beam clamp kit



MPLT62 TWO-WAY, ALL HORN LOADED, FULL-RANGE REPRODUCTION LOUDSPEAKER:

- Polymer horn
- New heavy-duty U-bracket included in North American model
- Available in grey



OVO3T 3" / OVO5T 5" TWO-WAY SURFACE MOUNT LOUDSPEAKERS:

- Ideal for combined background music and paging applications
- Included low-profile pan and tilt mounting bracket (OVO3T)
- Included pan & tilt U-bracket (OVO5T)
- Quick-Fit cable clamps ensure fast and easy mounting
- Available in black and white
- Paintable



DESONO LOW-PROFILE CEILING MOUNT LOUDSPEAKERS



Our renowned Desono loudspeakers are now available in two new low-profile models that greatly enhance system design flexibility and reduce installation time: the C-IC6LP and DX-IC6LP. Designed with the integrator in mind, the low-profile design — mounting depth less than 4" (101 mm) — allows installation in even the tightest ceiling spaces. Biamp's exclusive Springlock mounting clamps and magnetic, edgeless grilles, available in white or black, enable faster, easier — and toolless — installation. UL1480A and UL2043 certified.

DESONO C-IC6LP

- Optimized to integrate seamlessly into Biamp conferencing applications
- Includes RJ45 input jacks, supporting fast category cable installations in Biamp conference rooms
- Integrated mounting for Tesira AMP-450BP, four-channel "backpack" PoE+ amplifier
- 8 Ohm only installation

DESONO DX-IC6LP

- Optimized for distributed 70V/100V applications
- Features standard 4-pin Euroblock input connector with integrated pass-thru
- Includes a 60W transformer with front-mounted selector switch
- 70V/100V, or 8 Ohm



DESONO DX LOUDSPEAKERS

Featuring great acoustic performance, our D Series loudspeakers have been redesigned to better align with the rest of the Desono line with enhanced aesthetics, mounting features, and improved overall installation experience.



DX CEILING LOUDSPEAKERS

- True coaxial loudspeakers with HF compression drivers
- Highest sensitivity in the price category, allowing smaller amplifiers for equivalent SPL
- Wide, smooth dispersion—consistent listening experience throughout any space
- Edgeless, magnetic grille design
- Shallowest standard back cans in the market—fits tighter ceiling spaces than competitors
- New SpringLock Clamps automatically support the speaker once placed through the ceiling cutout and can be preset to accommodate thickness of any ceiling
- Extra-long grip range accommodates thick ceilings
- Maintains tool-free tile rail & c-ring installation
- UL2043 and UL1480A certified



DX SURFACE MOUNT LOUDSPEAKERS

- Two-way design, HF compression drivers
- High sensitivity and low distortion
- Matched voicing with DX Ceiling Loudspeakers
- Designed for applications where SPL and speech intelligibility are the highest priority
- Outdoor ready and indoor-elegant
- Impact-resistant polymer cabinets
- Marine-grade aluminum grilles
- 316 stainless steel and brass external hardware
- Available in black and white finishes
- Included CMX ClickMount pan-tilt mounting bracket
- Mounting brackets included, choice of CMX ClickMount pan-tilt bracket or U-Bracket.
- IP54 rated



DESONO EX LOUDSPEAKERS



Expansive Audio Delivered in a Sophisticated Design

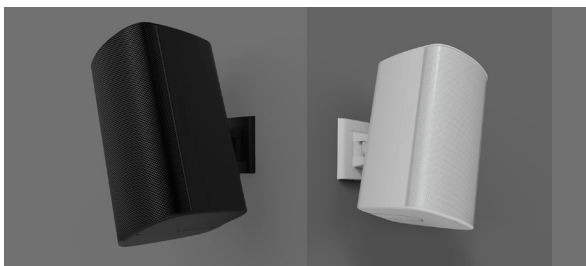
Desono™ EX surface mount loudspeakers provide excellent acoustic performance and elegant aesthetics with time-saving installation features for a diverse range of indoor and outdoor distributed applications, including presentation spaces, bars and restaurants, resorts and premium hospitality, multi-purpose spaces, themed entertainment, and sports facilities.

Four models available:

- EX-S6: 6.5" 2-way surface mount loudspeaker for applications requiring exceptional audio coverage in a small visual footprint
- EX-S8: 8" 2-way surface mount loudspeaker for detailed voicing with projection
- EX-S10: 10" 2-way surface mount loudspeaker for excellent musicality with deep low frequency
- EX-10SUB: 10" Subwoofer for use in distributed applications when additional bass is required

KEY FEATURES

- Two-Way Design
 - Consistent coverage from coaxial drivers
 - High-fidelity music and speech reinforcement
 - Low-frequency extension and flat frequency response
- Discreet and modern aesthetics
 - Outdoor ready and indoor-elegant
 - Hidden/discreet wiring ingress
- Mounting Flexibility
 - ClickMount™ Pan-Tilt Bracket: Pan 60° to each side and at least 24° of up or down tilt
 - ClickMount U-Bracket: Provides 100° of rotation to either side of the loudspeaker
- Certifications:
 - UL 1480A (USA)
 - CSA 62368-1 (Canada)
 - EN54-24 (EU)
- Theft and vandalism resistance
- Available in black or white finishes



VIDI CONFERENCING CAMERAS

Designed to equip small and medium size conference rooms for exceptional video meetings, Vidi conferencing cameras feature a 4K camera and professional beamtracking microphones designed for optimized conferencing. Vidi cameras are available in three models.

ALL MODELS FEATURE:

- 720p, 1080p, 4K/2160p at 30fps video quality
- 120° field of view with no distortion
- Built-in microphone array
- LED indicators for camera activity

AVAILABLE WITH VIDI 100:

- On-board signal processing for noise cancellation
- USB powered



AVAILABLE WITH VIDI 150:

- Auto framing via included remote control
- On-board signal processing for noise cancellation
- USB powered



AVAILABLE WITH VIDI 250:

- Electronic Pan/Tilt/Zoom with 5x zoom
- Auto framing technology keeps participants in frame
- Display mount and wall mount options



TESIRAFORTÉ X



Next Generation Meeting Room Signal Processors

The TesiraFORTÉ™ X Series is the next generation of open architecture conference room signal processors. Combining the core functionality of the current TesiraFORTÉ line, along with the capabilities of TesiraCONNECT™ TC-5D and Tesira™ EX-UBT in a sleek, streamlined design, TesiraFORTÉ X is perfectly suited for modern conferencing environments, where space is at a premium.

Compact enough to be installed anywhere, including behind a wall mounted display, TesiraFORTÉ X includes 4 PoE+ network ports to connect other conferencing equipment and supports both AVB and Dante® devices out of the box. The TesiraFORTÉ X series includes 400, 800, and 1600 models, featuring 4, 8, and 16 channels of acoustic echo cancellation (AEC) respectively, allowing the processors to support numerous digital microphones. A USB interface for audio connections to UC host devices is also included, allowing HID synchronization between Tesira and soft codec applications.

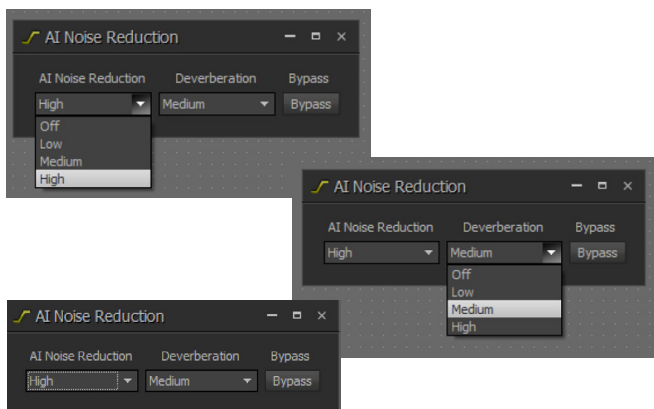
The new devices also feature Biamp Launch™, a new Biamp exclusive technology that allows devices to configure themselves.

KEY FEATURES

- Designed for modern meeting rooms with a small form factor
- Selectable network configuration—configure any network port for Dante, AVB media, VoIP, or control traffic
- Up to 16 channels of AEC, flexibly available across analog and digital I/O
- USB port with support for HID synchronization with UC platforms
- Next generation VoIP implementation
- Support for monitoring in SageVue™
- 2x2 analog I/O, 4 GPIO ports, 5 network ports (4 PoE+)
- 1-touch configuration and tuning with Biamp Launch
- **NEW** AI noise reduction algorithm for clear voice reproduction
- **NEW** support for Assistive Listening Systems ensures that hearing impaired meeting participants benefit from the entire audiovisual collaboration experience



TESIRA AI NOISE REDUCTION 2.0



AI noise reduction now available for any custom Tesira project including recording and telephony feeds, paging signals and more—in all types of spaces, from conference rooms, court rooms, and presentation spaces, to multi-purpose rooms, auditoriums, and stadiums.

KEY FEATURES

- Same great performance as the AI noise reduction in Parlé and Devio SCX
- Now available as a programming block in Tesira
- Offers adjustable AI noise reduction and reverberation settings (off / high / low / med)
- Includes a bypass button for easy demonstrations

PRO AV SWITCHES

NETGEAR Pro AV switches are designed to seamlessly integrate with Biamp solutions, such as Tesira digital signal processors and Cambridge Qt X sound masking. They include an AVB license and offer out-of-the-box configuration for seamless integration with Dante or AVB with no set-up required.



NMS-NG26GPX-AVB

- 26-port switch
- Ideal for Tesira applications in multi-purpose spaces, classrooms, lecture theaters, courts, casinos, and performance venues
- Supports up to 90 Qt X controllers



NMS-NG10GPX-AVB

- 10-port switch
- Ideal for Tesira applications in extra-large meeting spaces and divisible rooms, or with NPX convenience paging
- Supports up to 48 Qt X controllers

CAMBRIDGE QT X SERIES



Direct-Field and In-Plenum Sound Masking in One Powerful Solution

Combining our QtPro™ and DynasoundPro™ technologies into one powerful solution, the new Cambridge Qt™ X series offers both direct-field and in-plenum functionality to address the full spectrum of sound masking needs. Qt X controllers are available in 3-zone, 6-zone, and 8-zone models, and utilize existing emitter lines from both the QtPro and DynasoundPro families.

This series is designed to smoothly integrate with both Biamp's existing Tesira line and future paging solutions to better enable unified programming and deployment of sound management applications.





KEY FEATURES

- Supports both direct-field and indirect sound masking
- Seamless compatibility with convenience paging microphones and background music sources
- System architecture enables greater reliability, easy expansion, and network capabilities
- Enables out-of-the-box compatibility with any building's life-safety system
- AVB and Dante compatibility allows for easy integration with a broad range of devices
- Compatible with existing Qt and Dynasound emitters
- Full SageVue support for easy, centralized system management



Qt emitters



Dynasound emitters

TEC-X ENHANCEMENTS



Distinguished by its modern design aesthetic, the TEC-X family of AV control pads provide easy to use interfaces for controlling or scheduling the use of presentation spaces and conference rooms via highly intuitive capacitive touch capabilities. Our latest updates transform TEC-X from a user-friendly keypad into a simple, yet effective, entry control interface.

UPDATES INCLUDE:

- Instantaneous responsiveness and feedback
- Multiple Pages, page flip navigation up to 10 pages
- Add icons to buttons
- Updated font with international language support
- Text and icon justification options
- Assign page navigation to button actions
- Apply design options per button state including unique text, color, and icons

REVIT DESIGN FILES



Revit building information modeling (BIM) software from Autodesk brings all architecture, engineering, and construction disciplines into a unified modeling environment.

Thanks to new and improved Revit file information capabilities, which provide high-quality solutions for all of our products, Biamp is helping consultants/specifier partners save time and money when designing end-users' AV systems installations.

KEY BENEFITS:

- Developed in partnership with leading AV industry professionals
- 3D rendering capabilities
- Coverage radius calculation capability added from Biamp Conference Room Designer tool directly into Parlé Revit models
- Parametric functionality enables the adjustment of from-ceiling mounting distances
- Ability to simulate turning AV accessories on or off during system design
- More-detailed properties for Biamp products

biamp.

To learn more about the products in the Biamp pocket guide, scan the code below.



CONTACT US:

**9300 S.W. Gemini Dr.
Beaverton, OR 97008
USA**

E: biampinfo@biamp.com
W: biamp.com

1.800.826.1457
+ 1.503.641.7287

