

## **SIMULTANEOUS INTERPRETATION BOOTH SYSTEMS**



**TourGo Event Solution Co., Limited**

✉ info@tourgosolution.com

☎ +86-13417328556

☎ +86-755-28416965

🌐 www.tourgosolution.com

📍 ZHAOYE CREATIVE PARK, NO. 172 HUANGUAN MID ROAD, GUANHU STREET,

LONGHUA DISTRICT, SHENZHEN, CHINA

## Company profile

### **TourGo (TourGo Event Solution Co., Limited)**

Tourgo are specialists in the design and manufacture Interpreter Booth, flight case, aluminum truss, portable staging, dance floor, pipe and drape, crowd barrier, event tent, LED products from one offs to production runs...

Founded in 2005, over the years we have watched concept grow and gain a reputation for providing Quality Equipment. This alone would not have been enough without having a conscientious team that take pride in the work they do.

Tourgo works closely with its' clients, whether they be event organizers, managers, religious organizations, social groups or private individuals. By taking the time to understand your requirements we can take care of all aspects regarding your event, whether this be design, planning or technical...

### **TourGo Strength:**

Lead by engineers with decades of design experience, our team is on hand to handle your OEM/ODM orders, we can design products follow your demand, sample order time only takes 2-3days. You can also choose from our over 5,000 production-ready models.



## Content

Introduction	3-4
1-Person Interpreter Booths	5-6
Standard 2-Person Interpreter Booths	7-8
Full Transparent 2-Person Interpreter Booths	9-10
Easy-to-elevator 2-Person Interpreter Booths	11-12
3-Person Interpreter Booths	13-14
Table-top interpreter booths	15-16
Accessories	17-18
Step by step assembly manual	
Two person booths assembly manual	19-22
Three person booths assembly manual	23-26

## Interpreter booths

Interpreter booths are designed to create the best acoustic environment for the distinction of various languages spoken simultaneously. It provides the perfect visual and two-way audio communication between the interpreters and the participants in various meetings conferences.

The interpreter booths is a light weight, modular, easy to mount interpreter booth, but can be extended for up to 4 persons, using the optional extension sets. 2 persons can easily build the booth without any tools. The booths comply with the ISO 4043 norm for mobile interpreter booths and is equipped with table and 2 cable ducts.

## Benefit

- ▲ Easy installation, can be performed by 1-2 person
- ▲ Very comfortable working environment
- ▲ Clear view window (acrylic)
- ▲ Durable build
- ▲ The table is easy to install without using tools at all
- ▲ Good looking and Comfortable
- ▲ Suitable for all types for conference systems

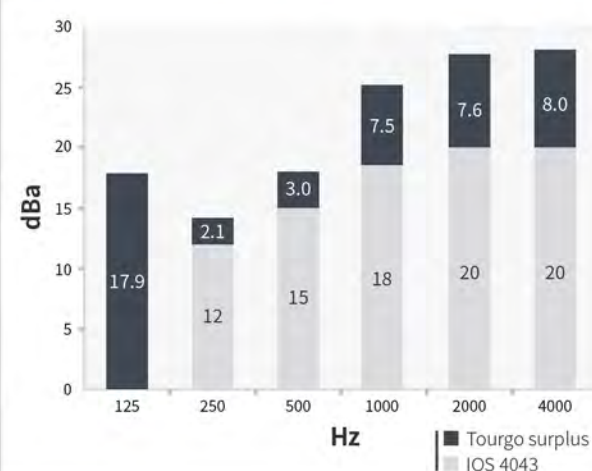
## Color card



## Project



## 1-Person Interpreter Booths



### Ref.

### TG-1LBOOTH5

External Dimension in mm	W 870 x D 1600 x H 2020 incl, ventilation fans
Internal Dimension in mm	W 800 x D 1530 x H 2000
Panel Thickness in mm	35
Weight	180.0kg incl. ventilation system and table
Colour	Dark gray Other colours available on request
Sound insulation capacity	Comply with ISO 4043
Table Dimensions in mm	800 x 500
Front Window Dimension in mm	680 x 860
Side Window Dimension in mm	680 x 860
Ventilation	included
Power Supply	110~130V/220~240V - 50~60Hz 10A
Be Optional	LED lights on the roof

### Interpreter Booth panels

ITEM	Dimension (cm)	Quantity	Unit Weight (kg)
Front Window panel	80 x 200	1	22.0
Side Window panel	83.5 x 200	2	17.4
Standard panel	80 x 200	2	13.5
Door panel	80 x 200	1	20.0
Work table	80 x 50	1	3.6
Roof panel	87 x 161	1	7.7
Ventilation	13 x 18 x 36	2	2.0
Subtotal			119
<b>Packing Material</b>			
Packing Carton	210 x 63 x 102	1	5.0
Dedicated flight-case	208 x 61 x 100	1	56
Subtotal			61
<b>Total</b>			<b>180</b>

### Sound Attenuations

Difference between acoustic pressure levels (D) from the booth to the room					
Frequency(Hz)	250	500	1000	2000	4000
D(dBa)	14.1	18.0	25.3	27.6	28.0

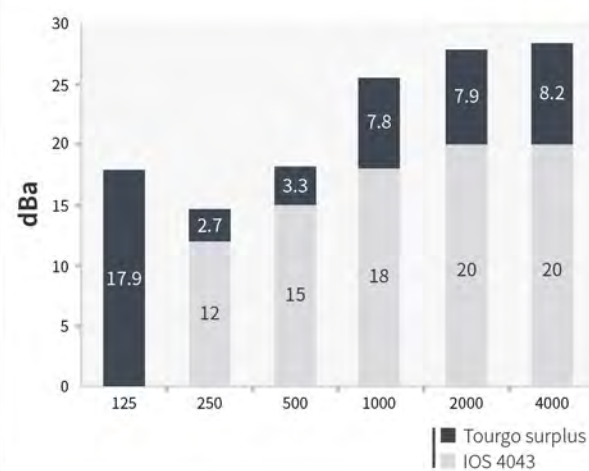


Assembly: No tools are required  
 Approx. Assembly time: In 10 minutes  
 Storage & Shipping: Included (1)ATA-300 shipping case on wheels

### Standard 2-Person Interpreter Booths



Hz



Ref.	TG-2LBOOTHS
External Dimension in mm	W 1600 x D 1600 x H 2020 incl, ventilation fans
Internal Dimension in mm	W 1530 x D 1530 x H 2000
Panel Thickness in mm	35
Weight	235 kg incl. ventilation system and table
Colour	Dark gray Other colours available on request
Sound insulation capacity	Comply with ISO 4043
Table Dimensions in mm	1530 x 500
Side Window Dimension in mm	680 x 860
Ventilation	included
Power Supply	110~130V/220~240V - 50~60Hz 10A
Be Optional	LED lights on the roof

### Interpreter Booth panels

ITEM	Dimension (cm)	Quantity	Unit Weight (kg)
Front Window panel	83.5 x 200	2	17.5
Side Window panel	83.5 x 200	2	17.5
Standard panel	80 x 200	3	13.5
Door panel	80 x 200	1	18.6
Work table	160 x 50	1	4.8
Roof panel	80 x 161	2	9.8
Ventilation	13 x 18 x 36	2	2.0
Subtotal			157.5
Packing Material			
Packing Carton	210 x 70 x 110	1	5.0
Dedicated flight-case	208 x 68 x 105	1	72.5
Subtotal			77.5
<b>Total</b>			<b>235</b>

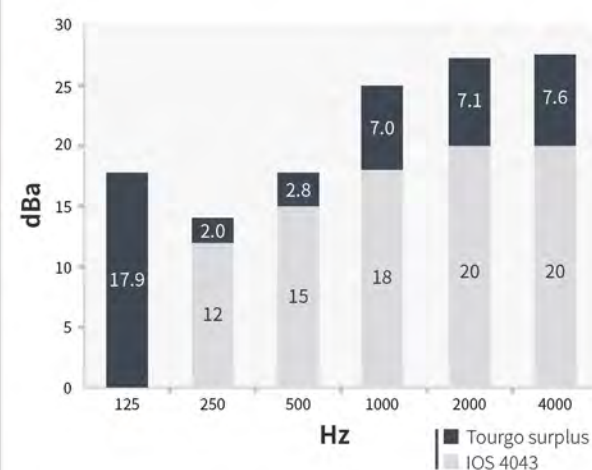
### Sound Attenuations

Difference between acoustic pressure levels (D) from the booth to the room					
Frequency(Hz)	250	500	1000	2000	4000
D(dBa)	14.7	18.3	25.8	27.9	28.2

Assembly: No tools are required  
 Approx. Assembly time: In 10 minutes  
 Storage & Shipping: Included (1)ATA-300 shipping case on wheels



## Full Transparent 2-Person Interpreter Booths



### Ref.

### TG-2BSOOTH3

External Dimension in mm	W 1600 x D 1600 x H 2020 incl. ventilation fans
Internal Dimension in mm	W 1530 x D 1530 x H 2000
Panel Thickness in mm	35
Weight	304 kg incl. ventilation system and table Full Transparent
Colour	Transparent
Sound insulation capacity	Comply with ISO 4043
Table Dimensions in mm	1530 x 500
Ventilation	included
Power Supply	110~130V/220~240V - 50~60Hz 10A
Be Optional	LED lights on the roof

### Interpreter Booth panels

ITEM	Dimension (cm)	Quantity	Unit Weight (kg)
Standard panel	80 x 200	7	23.0
Door panel	80 x 200	1	25.0
Work table	160 x 50	1	8.0
Roof panel	80 x 161	2	10.5
Ventilation	13 x 18 x 36	2	2.0
Subtotal			219

### Packing Material

Packing Carton	210 x 70 x 110	1	3.0
Dedicated flight-case	208 x 68 x 108	1	82.0
Subtotal			85.0
<b>Total</b>			<b>304.0</b>

### Sound Attenuations

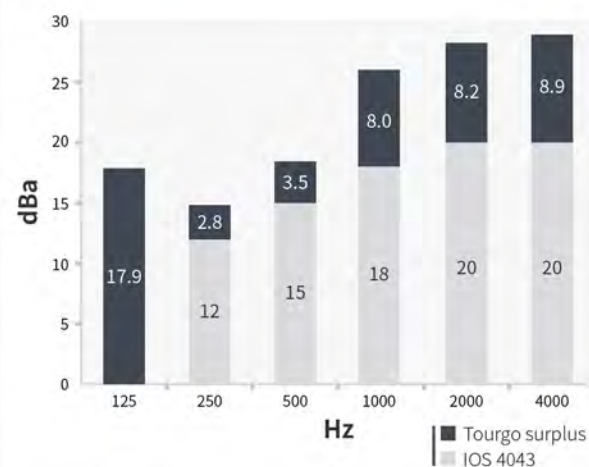
#### Difference between acoustic pressure levels (D) from the booth to the room

Frequency(Hz)	250	500	1000	2000	4000
D(dBa)	14.0	17.8	25.0	27.1	27.6

Assembly: No tools are required  
 Approx. Assembly time: In 10 minutes  
 Storage & Shipping: Included (1)ATA-300 shipping case on wheels



### Easy-to-elevator 2-Person Interpreter Booths



Ref.	TG-2NBOOTHS
External Dimension in mm	W 1600 x D 1600 x H 2020 incl. ventilation fans
Internal Dimension in mm	W 1530 x D 1530 x H 2000
Panel Thickness in mm	35
Weight	256 kg (2 pack) incl. ventilation system and table
Colour	Dark gray
Sound insulation capacity	Comply with ISO 4043
Table Dimensions in mm	1530 x 500
Window Dimension in mm	680 x 860
Ventilation	included
Power Supply	110~130V/220~240V - 50~60Hz 10A
Be Optional	LED lights on the roof

### Interpreter Booth panels

ITEM	Dimension (cm)	Quantity	Unit Weight (kg)
Standard panel	83.5 x 100	10	6.0
Window panel	83.5 x 100	4	8.0
Door panel	83.5 x 100	2	9.0
Work table	160 x 50	1	8.0
Roof panel	81 x 81	4	5.0
Ventilation	13 x 18 x 36	2	2.0
Subtotal			142
Packing Dimension			
Flight case	127 x 64 x 104	1	150
Flight case	92 x 64 x 104	1	106
<b>Total</b>			<b>256</b>

### Sound Attenuations

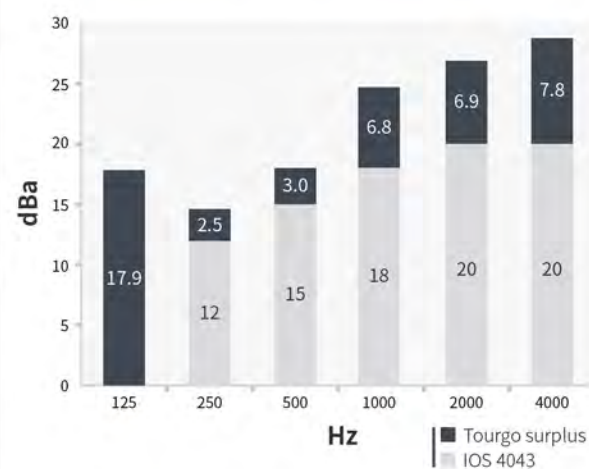
Difference between acoustic pressure levels (D) from the booth to the room

Frequency(Hz)	250	500	1000	2000	4000
D(dBa)	14.8	18.5	26.0	28.2	28.9



Assembly: No tools are required  
 Approx. Assembly time: In 10 minutes  
 Storage & Shipping: Included (2)ATA-300 shipping case on wheels

### 3-Person Interpreter Booths



Ref.	TG-3LBOOTHS
External Dimension in mm	W 2400 x D 1600 x H 2020 incl, ventilation fans
Internal Dimension in mm	W 2330 x D 1530 x H 2000
Panel Thickness in mm	35
Weight	286 kg (2 pack) incl. ventilation system and table
Colour	Dark gray Other colours available on request
Sound insulation capacity	Comply with ISO 4043
Table Dimensions in mm	2330 x 500
Window Dimension in mm	680 x 860
Ventilation	included
Power Supply	110~130V/220~240V - 50~60Hz 10A
Be Optional	LED lights on the roof

### Standard 2-person interpreter booths

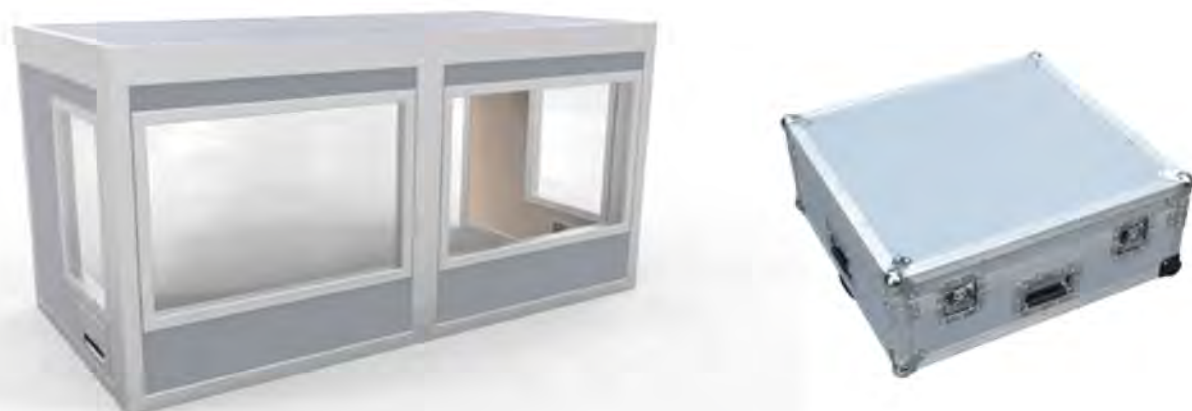
ITEM	Dimension (cm)	Quantity	Unit Weight (kg)
Window panel	83.5 x 200	4	17.5
Standard panel	80 x 200	3	13.5
Door panel	80 x 200	1	18.6
Work table	160 x 50	1	4.8
Roof panel	80 x 161	2	9.8
Ventilation	13 x 18 x 36	2	2.0
Subtotal			157.5
<b>Packing Material</b>			
Packing Carton	210 x 70 x 110	1	5.0
Dedicated flight-case	208 x 68 x 105	1	72.5
Subtotal			77.5
<b>Total</b>			<b>235</b>

### Extension Set for 3-person booths

ITEM	Dimension (cm)	Quantity	Unit Weight (kg)
A panel	76 x 200	1	10.5
B panel	80 x 200	1	12.5
Extension roof panel	80 x 161	1	8.6
Foldable table	233 x 50	1	2.0
Ventilation	13 x 18 x 36	1	2.0
Subtotal			32
<b>Packing Material</b>			
Packing Carton	210 x 40 x 110	1	1
Dedicated flight-case	208 x 37 x 105	1	18
Subtotal			19
<b>Total</b>			<b>51</b>

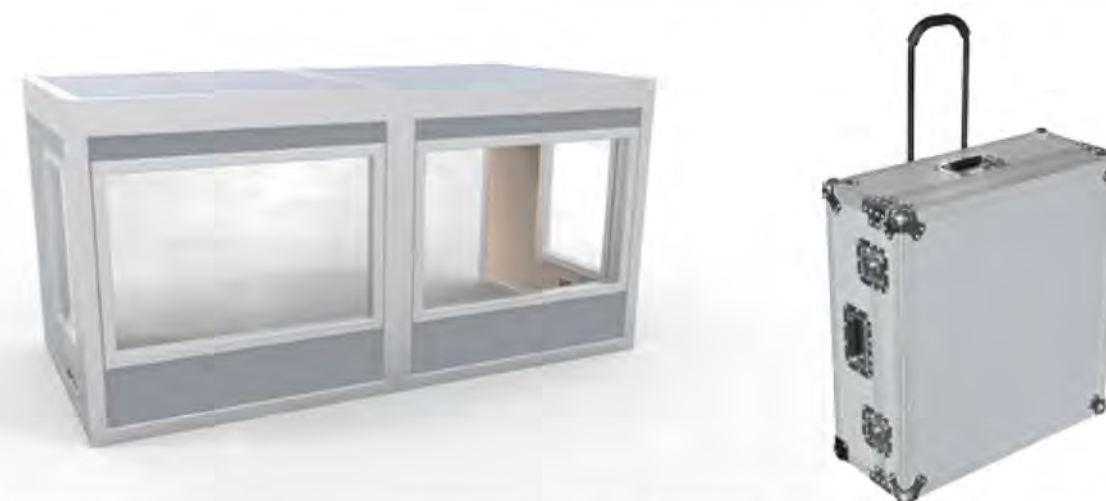


### Economic Table-Top Interpreter Booths



Ref.	TG-2TBOOTH
External Dimension in mm	W 1200 x D 600 x H 600 NO fans
Internal Dimension in mm	W 1140 x D 540 x H 570
Panel Thickness in mm	30
Weight	40.8 kg
Colour	Dark gray Other colours available on request
Flight Case with inner wheels	Available

### Extended Table-Top Interpretation Booths



Ref.	TG-2ETBOOTH
External Dimension in mm	W 1400 x D 700 x H 700 NO fans
Internal Dimension in mm	W 1340 x D 640 x H 670
Panel Thickness in mm	30
Weight	47.3 kg
Colour	Dark gray Other colours available on request
Flight Case with inner wheels	Available

#### Interpreter Booth panels

ITEM	Dimension (cm)	Quantity	Unit Weight (kg)
Front Panel	120 x 57	1	7.7
Side Panel	57 x 57	2	3.9
Roof Panel	120 x 60	1	7.0
Subtotal			22.3
<b>Packing Material</b>			
Packing Carton	72 x 69 x 31	1	3.0
Dedicated flight-case	70 x 67 x 29	1	15.5
Subtotal			18.5
<b>Total</b>			<b>40.8</b>

#### Interpreter Booth panels

ITEM	Dimension (cm)	Quantity	Unit Weight (kg)
Front Panel	140 x 67	1	8.7
Side Panel	67 x 67	2	4.5
Roof Panel	140 x 70	1	8.0
Subtotal			25.7
<b>Packing Material</b>			
Packing Carton	79 x 75 x 31	1	4.0
Dedicated flight-case	77 x 73 x 29	1	17.6
Subtotal			21.6
<b>Total</b>			<b>47.3</b>

### Trolley for Interpreter Booths



Ref.	TG-IBTY
External Dimension in mm	W 1200 x D 600 x H 600
Weight	28.0 kg
Colour	Black
Load Bearing	250 kg
4" Swivel Plate Casters	2+2 Brakes
Usage	Loading 11 pcs interpreter booth panels

### Silent Ventilation Fans



Ref.	TG-VS110
External Dimension in mm	130 x 180 x 360
Power Supply	110~130V/220~240V - 50~60Hz 10A
Plug	UK/Euro/US/China Plugs
Cable Length in mm	1500
Speed control	Available
Brand of Fan	SUNON

### Foldable Table for Economic Table Top Interpreter Booths Use



Ref.	TG-5T4BS
Folded Dimension in mm	L 760 x W 710 x D 90
Open Dimension in mm	L 1520 x W 710 x H 740
Packing Dimension in mm	L 780 x W 710 x D 100
Net Weight	11.2 kg
Packed Weight	13 kg
Colour	White

### Foldable Table for Extended Table Top Interpreter Booths Use



Ref.	TG-6T14BS
Folded Dimension in mm	L 900 x W 740 x D 90
Open Dimension in mm	L 1800 x W 740 x H 740
Packing Dimension in mm	L 920 x W 760 x D 100
Net Weight	14 kg
Packed Weight	17 kg
Colour	White

# 2-PERSON INTERPRETER BOOTHS ASSEMBLY MANUAL



## Description:

- ▲ No.1-No.8 : wall panel
- ▲ No.11-No.10: roof panel
- ▲ No.11: working table
- ▲ 2 sets of Ventilation system in the corner of the case



Installation video

When start to assemble the interpreter booths, please start from No.1-No.11 finally Install Ventilation system

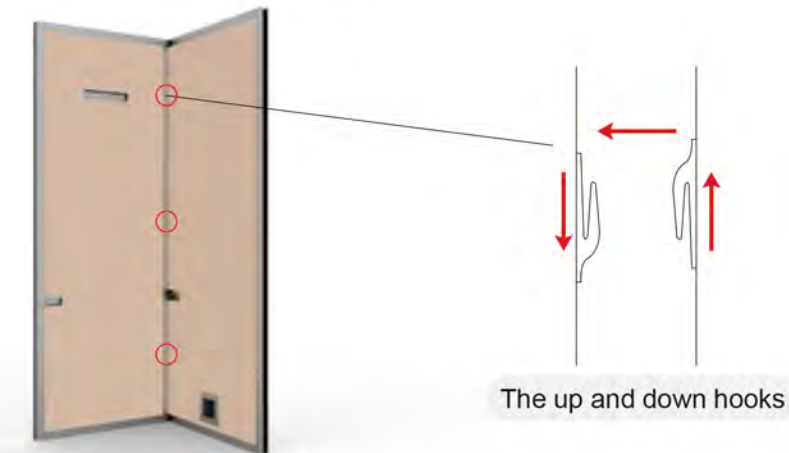
When disassemble the booths, please start from Ventilation system No.11-No.1

Please put the panels into the flight case in the correct sequence

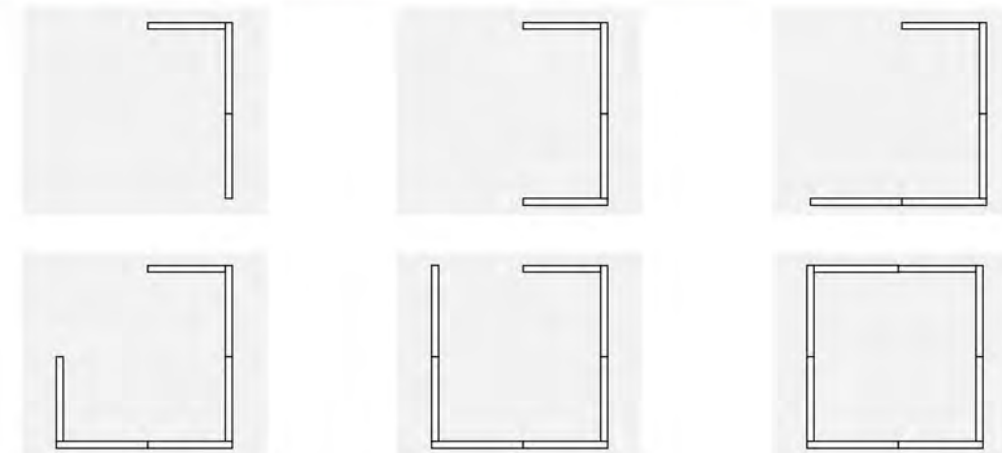
**1** Open the flight case, take No. 1 panel



**2** One person hold No.1 panel, another person install No.2 panel with No. 1 panel using the up and down hooks at the side of the panels  
 Pls attention: it has 3 pcs hooks on one side for every wall panel, please align at every hook, then press down to connect.



**3** Repeat the same step to install No.3 - No.8



**Pay an attention on installing No. 8 door panel.**

First ,please align at No.1 panel edge with No.8 panel , hold on,then align at No. 7 panel edge with No. 8 panel. OK , now press down to connect.

**4** Install the roof of the booth

Put No.9 roof panel on the top of booth, right way. And make sure the roof panel fixed frame is inside of the booth. Repeat and install No.10 roof panel, then lock them together by the butterfly latch.

**Please make sure the booths is square shape when install the roof panels.**



Roof panel fixed frame

**5** Install the working table

Use the hook of the table panel to connect the lock on the wall panel. Make sure the working table is at the same level!

**Please make sure the booths is square shape when install the roof panels.**

**6** Install the Ventilation system

Put the vent on top of the booth, the end is fixed into the hole of the roof. The plug will be made as your request.



**OK, finish the whole interpreter booth assemble.**



# 3-PERSON INTERPRETER BOOTHS ASSEMBLY MANUAL



## Description:

Standard flight case include:

- ▲ No.1-No.10 : wall panel
- ▲ No.11-No.12: roof panel
- ▲ No.13: working table
- ▲ 2 sets of Ventilation system in the corner of the case

Extension Set flight case include:

- ▲ Panel A : Wall panel
- ▲ Panel B : Wall Panel
- ▲ Extension roof panel(Middle)
- ▲ Extension Ventilation
- ▲ Extension foldable table

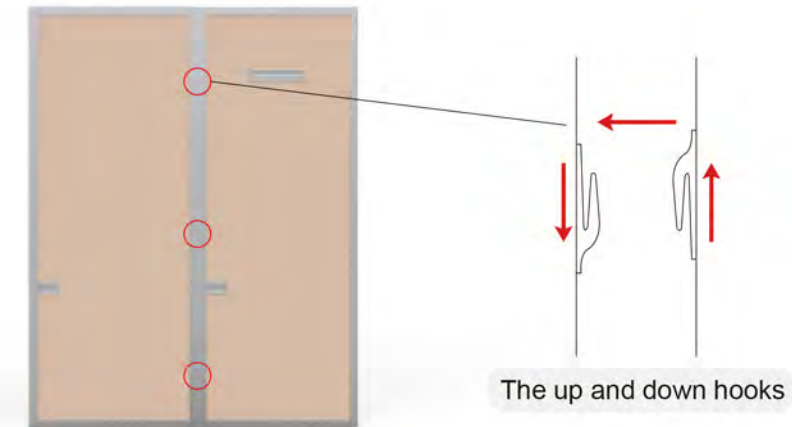


Installation video

**1** Open the flight case, take No. 1 panel

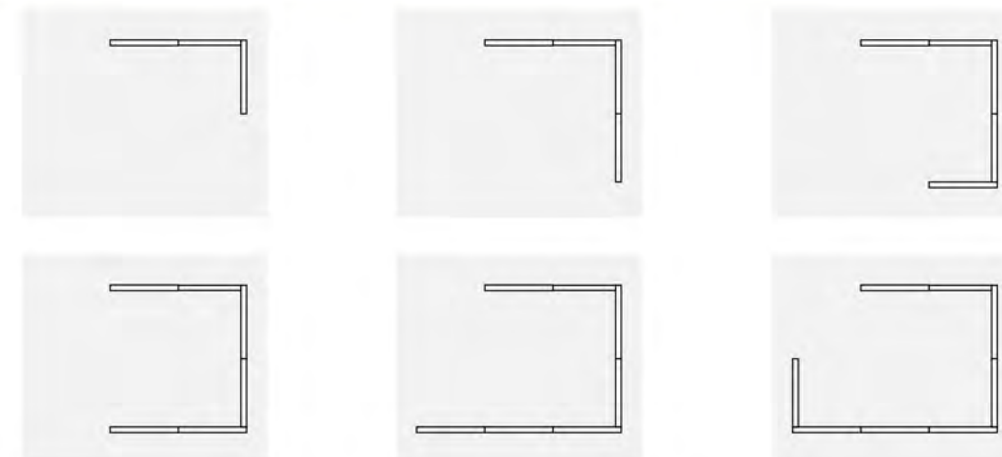


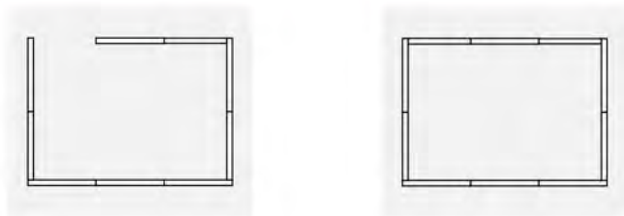
**2** One person hold No.1 panel, another person install panel A with No. 1 panel using the up and down hooks at the side of the panels  
 Pls attention: it has 3 pcs hooks on one side for every wall panel, please align at every hook, , then press down to connect.



The up and down hooks

**3** Repeat the same step to install  
 No.2 - No.3 - Panel B - No. 4 - No.5 - No.6 - No.7- No.8 - No.9 - No.10





**Pay an attention on installing No. 10 door panel**

First ,please align at No.1 panel edge with No.10 panel , hold on,then align at No. 9 panel edge with No. 10 panel. OK , now press down to connect.

**4** Install the roof of the booth

Put No.11 roof panel on the top of booth, right way. And make sure the roof panel fixed frame is inside of the booth. Repeat and install Extension roof panel(Middle) & No.12 roof panel, then lock them together by the butterfly latch.

**Please make sure the booths is rectangle shape when install the roof panels.**



**5** Install the working table

Take out the extension foldable table  
Use the hook of the table panel to connect the lock on the wall panel.Make sure the working table is at the same level!



**6** Install the Ventilation system

Put the vent on top of the booth, the end is fixed into the hole of the roof. The plug will be made as your request.



**OK, finish the whole interpreter booth assemble.**

